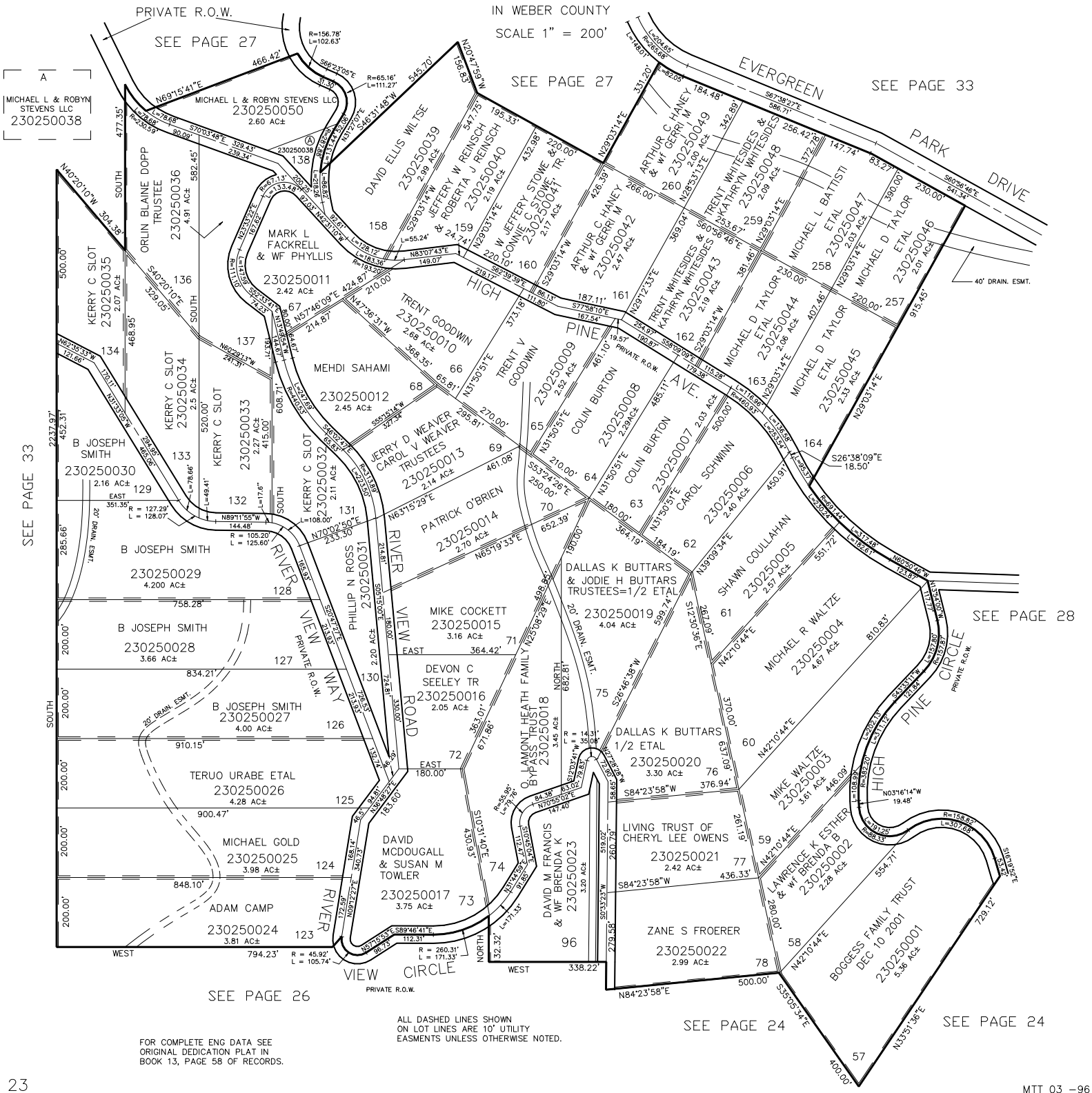


PART OF SEC. 31-32, T.7N., R.3E., S.L.B. & M.  
EVERGREEN PARK SUBDIVISION NO. 1

TAXING UNIT: 58

IN WEBER COUNTY  
SCALE 1" = 200'



A  
MICHAEL L. & ROBYN  
STEVENS LLC  
230250038

SEE PAGE 33

23

FOR COMPLETE ENG DATA SEE  
ORIGINAL DEDICATION PLAT IN  
BOOK 13, PAGE 58 OF RECORDS.

ALL DASHED LINES SHOWN  
ON LOT LINES ARE 10' UTILITY  
EASEMENTS UNLESS OTHERWISE NOTED.

SEE PAGE 24

SEE PAGE 24